



INSTITUTIONAL EQUIPMENT, INC.

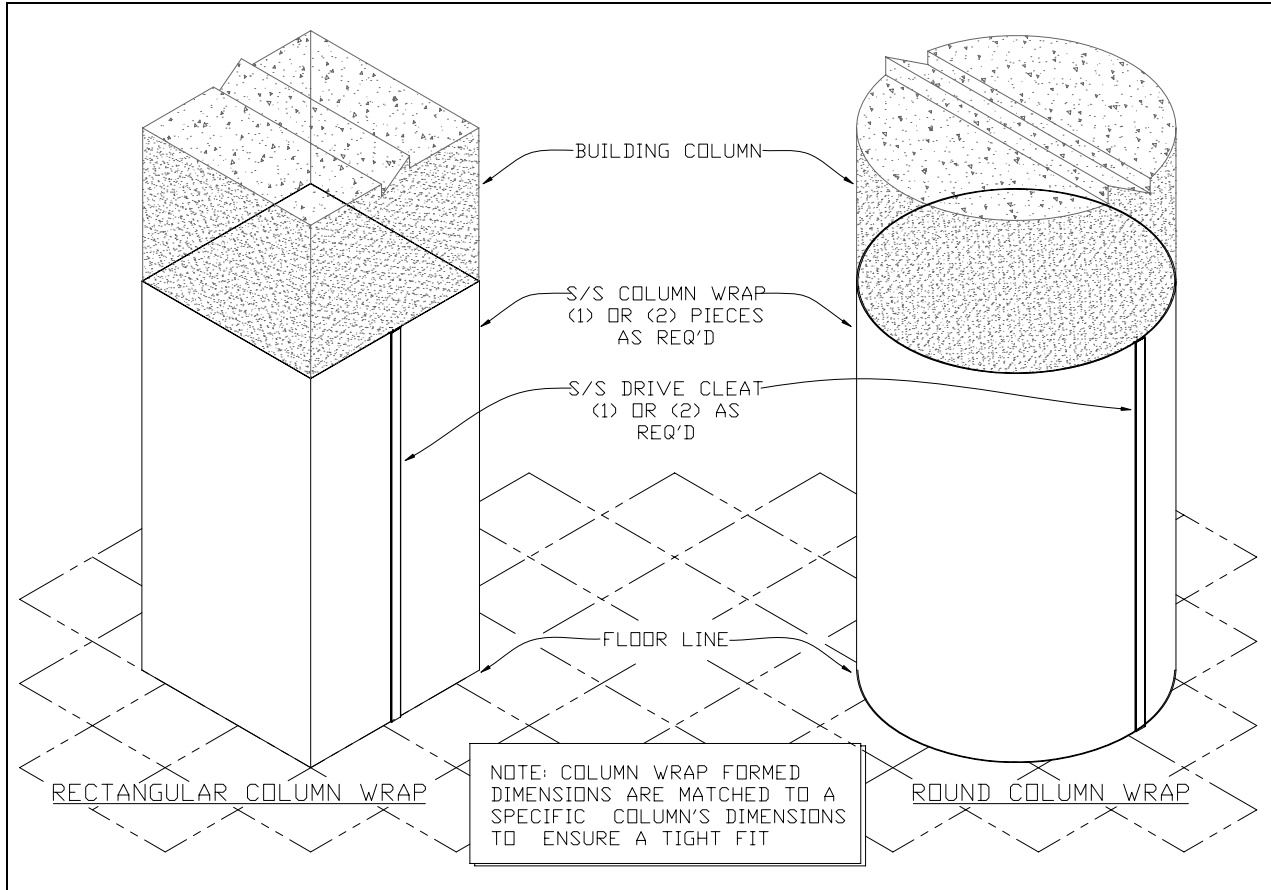
◆ Foodservice ◆ Architectural ◆ Fabrication ◆ Installation

Column Wrap

Job Name: _____

Item No.: _____

CUSTOM STAINLESS STEEL COLUMN WRAP



- ◆ Formed to match each column's dimensions for a tight fit
- ◆ 20 gauge type 304 stainless steel standard, 18 or 16 gauge optional
- ◆ Professional measurement and installation available
- ◆ One or two piece construction depending on column dimensions
- ◆ Quick turnaround from measurement to fabrication
- ◆ #4 Satin Finish, horizontal grain
- ◆ Optional materials: Brass, Bronze, Aluminum, Muntz, or other specified metal



Institutional Equipment, Inc. is a custom steel fabricator and equipment installer located in the Chicagoland area. Products include a full range of custom foodservice equipment, architectural elements crafted to specification, and custom stainless steel tables, countertops, and cabinetry. We are a versatile manufacturer specializing in quick turn production, designed to specification, offering professional, licensed, bonded installation.

Institutional Equipment, Inc. 704 Veterans Parkway Unit B Bolingbrook, IL 60440
Phone 630-771-0990 Fax 630-771-0994 www.ieiusa.net



INSTITUTIONAL EQUIPMENT, INC.

◆ Foodservice ◆ Architectural ◆ Fabrication ◆ Installation

Column Wrap

Job Name: _____

Item No.: _____

CUSTOM STAINLESS STEEL COLUMN WRAP

<p>RECTANGULAR COLUMN WRAP DIMENSION KEY</p>	<p>ROUND COLUMN WRAP DIMENSION KEY</p>
<p>RECTANGULAR COLUMN OUTSIDE DIMENSIONS</p>	<p>ROUND COLUMN OUTSIDE DIMENSIONS</p>
<p>HEIGHT REQUIRED</p>	<p>HEIGHT REQUIRED</p>
<p>HGT: _____</p>	<p>HGT: _____</p>
<p>TOP DIMENSIONS</p>	<p>TOP CIRCUMFERENCE</p>
<p>T1: _____</p>	<p>T1: _____</p>
<p>T2: _____</p>	<p>BOTTOM CIRCUMFERENCE</p>
<p>T3: _____</p>	<p>B1: _____</p>
<p>T4: _____</p>	
<p>BOTTOM DIMENSIONS</p>	
<p>B1: _____</p>	
<p>B2: _____</p>	
<p>B3: _____</p>	
<p>B4: _____</p>	

HEIGHTS GREATER THAN 60" REQUIRE A HORIZONTAL HAIRLINE SEAM

Specification

Provide stainless steel column wrap size and shape as shown on drawings. (20) (18) (16) gauge 304 stainless steel with a #4 satin finish, horizontal grain.

The column wrap shall be formed to fit a specific column to ensure a tight fit. A full height drive cleat shall be provided to lock the s/s wrap to the column. Deburr all edges.